

Part Number	Performance Standard	Dust Cover Option
1711160-2	TIA-568-C.2 Cat 6A / ISO 11801 Class E _A	with Dust Cover
1711342-2	TIA-568-C.2 Cat 6A / ISO 11801 Class E _A	without Dust Cover

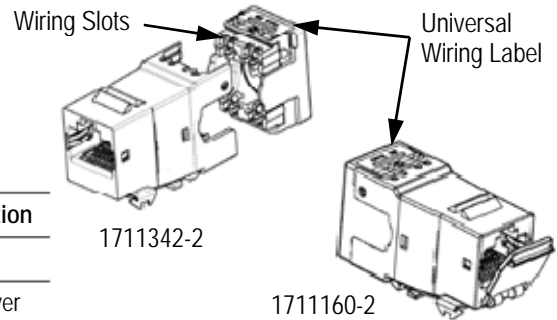


Figure 1

1. INTRODUCTION

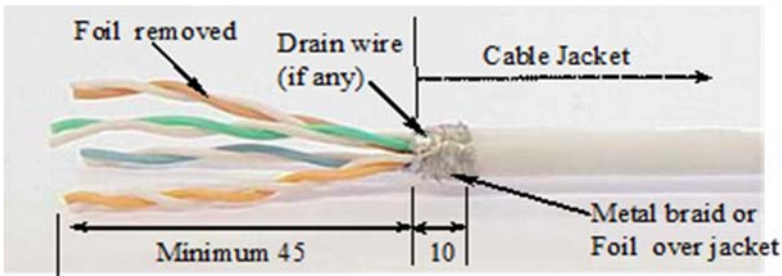
This instruction sheet provides termination procedures for the modular jacks given in Figure 1. The SL Series Jack Tool (1725150-3) is required for proper termination of the jacks covered by this procedure.

2. DESCRIPTION

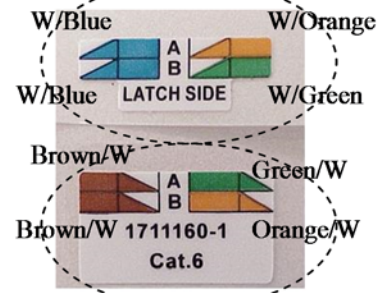
Each modular jack accepts 4-pair, twisted-pair cable with solid conductor sizes 26 through 22 AWG (0.40 mm to 0.60 mm diameter) or stranded conductor sizes 26 through 24 AWG with a conductor insulation diameter range of 0.8 mm to 1.6 mm [.03 in. to .06 in.], and cable jacket outer diameter range 5.0 mm to 9.0 mm [.20 in. to .35 in.]. The modular jack features a universal wiring label used to aid in proper wire color coding and a wiring block that terminates the wire. The AMP-TWIST Jack fits into an SL Series panel opening.

3. CABLE PREPARATION, JACK ASSEMBLY AND TERMINATION

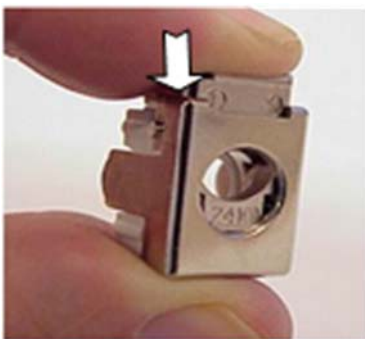
- ① S/FTP and F/FTP (Compact) cable: Prepare the cable and cut the pair foils as shown.



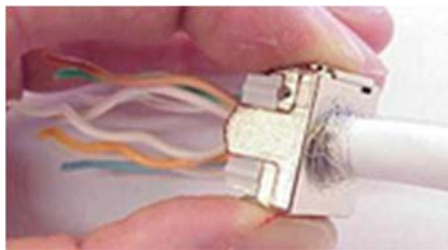
- ② Color coding according to T568A or T568B as required.



- ③ Push the cable clamp to open it.



- ④ Insert the cable through the cable clamp hole until pair foil is visible on the opposite side. Release the cable clamp, ensuring that the clamp makes good contact with the cable shield.

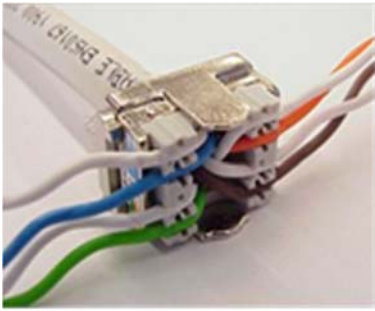


NOTE

The metal braid (S/FTP), metal foil (F/FTP), and drain wire (if any) must be in contact with the clamp.

Figure 2 (continued)

⑤ Sort the wires and place them into slots according to relevant color coding.



⑥ Push the rear housing into the front housing until engaged.

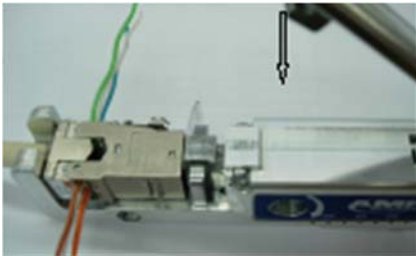


NOTE

To avoid damage the dust cover and/or connector, the dust cover must be opened prior to insertion into the tool.

Open Dust Cover before next step

⑦ Position the pre-assembled jack into the SL Tool (1725150-3). Squeeze the handle until the rear housing latches to the front housing.



⑧ The wires are cut automatically. With the SL Tool handle in the closed position, remove the excess wires and discard.



⑨ The connector is now terminated and ready to be installed into the application.



Figure 2 (end)

4. JACK DISASSEMBLY

① To re-open the jack, carefully insert a small screwdriver into the slots at the rear of the jack (on both sides of the jack).



② Use the small screwdriver to gently pry the rear housing away from the front housing.



Figure 3

5. REPLACEMENT

Do not use damaged or defective product. These modular jacks are not repairable.

6. REVISION SUMMARY

- US version: Initial release.
- Please see 411-93007 for international version of this instruction sheet.
- Revision A1 corrects document security classification error (change from Class 3 to Class 1).